

FF dab:FastForwards

Functionality

dab:FastForwards can be described as checking stages, reports, analyses or analysis routines. To put it simply, it's a comprehensive toolbox, consisting of a portfolio of cross-industry analysis methods, which support operational mass data ("Big Data") in their analyses. Recurring queries can be easily answered with the press of a button. dab:FastForwards can be utilised on SAP®-Systems and/or SAP® data files.

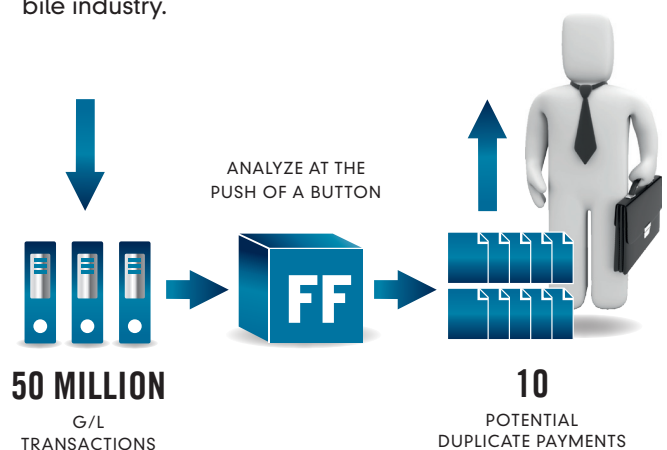
Amongst other things, dab:FastForwards cover the categories of Purchasing, Accounts Payable, Sales, Accounts Receivable, Controlling, Financial Accounting, Investments, Pricing, Cash Recovery, Master data, Fraud Detection, Compliance and Data Quality.

User base

The dab:FastForwards solution finds use in all areas of the business data analysis when large amounts of data ("Big data") are involved, for instance, from SAP®. It is

especially suited to auditors and auditing departments (internal audit), users in controlling, for financial accounting, economic auditors, tax accountants or IT departments.

Accordingly, the dab:FastForwards can be utilised in cross-industry situations. Amongst others, it is utilised by numerous large international companies in industries such as telecommunications, chemicals, healthcare, energy supply, insurance, white goods and the automobile industry.



CATEGORY
<p>Compliance, Risk, Fraud, IKS Aspects in the areas of fraud prevention and exposure as well as the internal control system (IKS).</p>
<p>SOD & Authorisations Detective (downstream) analyses in the area of Segregation of Duties (4-Eye-Principle).</p>
<p>Cash Protection & recovery Reveal monetary losses including possible recovery potential.</p>
<p>P2P process (Purchase-to-Pay) Analyses that relate to the entire P2P process, from purchase requisition through to outgoing payment.</p>
<p>Process O2C (Order-to-Cash) Analyses that relate to the entire O2C process, from customer order through to incoming payment.</p>
<p>General Ledger Analysis of the general ledger in varying manifestations</p>
<p>Data Quality Queries with regard to the data quality in SAP®, customer, supplier or material master data, as well as customising aspects.</p>

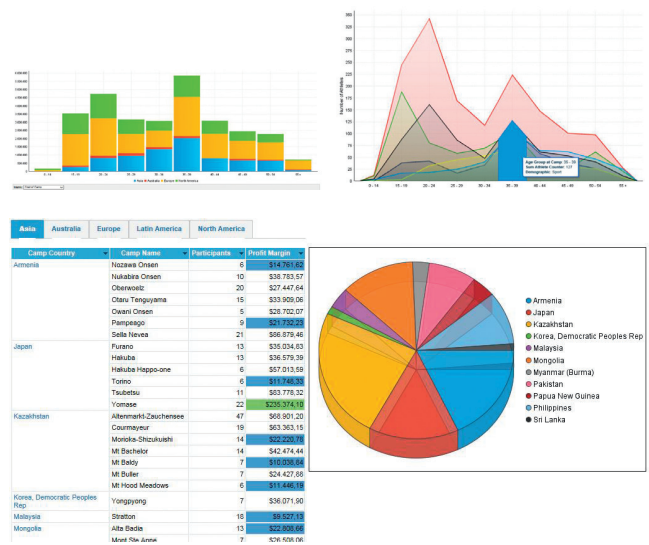
SELECTED EXAMPLE
<p>Payments in critical receiver countries, Bank country/country of domicile/delivery country deviations, analysis of critical posting texts, frequent changes in banking details.</p> <p>Amendment to banking master data & start of the automatic payment run.</p>
<p>Double payments analysis, debit and credit discount losses.</p>
<p>Double payments analysis, CpD-bookings, manual payments, analysis of invoices without related order.</p>
<p>Free goods, frequent customer amendments to credit limits, credit notes and customer bonuses.</p>
<p>Analysis of bookings to predefined real accounts, cost centre evaluation.</p>
<p>Duplicate customer and master data records, conditions of payment, duplicate banking details.</p>

Advantages

- Extensive analysis portfolio: Currently over 250 individual aspects can be analysed.
- Good performance: Even with large amounts of data ("Big data"), quick results are achieved due to analysis software such as ACL™, for example.
- Comparability: The results of various audits or analyses are standardised and comparable.
- KPI: Key Performance Indicators give a rapid overview of the actual situation and possible risks.
- Detailed information: Critical individual transactions are listed and can be researched within the system.
- Transparency: A document exists for each and every analysis, which is represented in detail in its functionality.
- Continuous Controls Monitoring: The analyses are suitable for use on an ad-hoc basis, but also for complete CCM landscapes.
- Defined database: The tables and fields are documented for each and every dab:FastForward.
- Reliability: Through cross-industry use, the results are universally valid and reliable.

Software environment

- Analysis software ACL™ Desktop or ACL™ Audit Exchange
- dab:Exporter
- PC with 1 GB RAM and at least 500 MHz



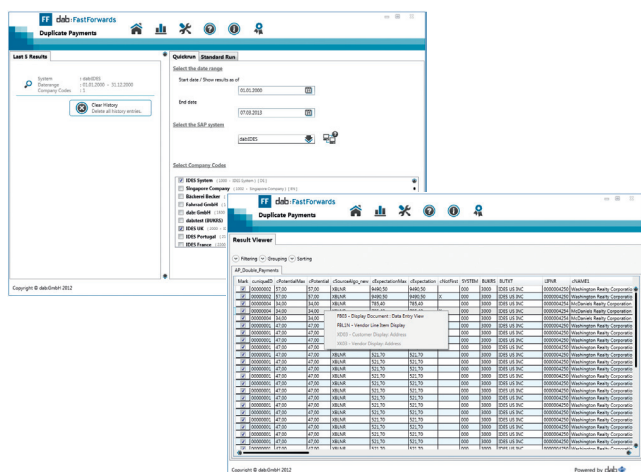
Implementation possibility in ACL™ Audit Exchange Dashboard

Price model

Alongside licensing for complete analysis packs and individually tailored combinations, individual stages can also be purchased from the portfolio. This makes high flexibility possible for many varying operational scenarios. Contact us for your respective offer!

Implementation possibilities

There are different possibilities of implementation on request. The graphics show the integration of dab:FastForwards in the ACL™ Desktop, or the results visualised in the ACL™ Audit Exchange by way of the Dashboard functionality. Implementation of separate analysis programs ("Clients") is possible.



Double payment analysis as a standalone program ("Client")

© 2013 dab:GmbH, Microsoft®, Windows®, Excel, Access, Navision and SQL-Server® are registered trademarks of Microsoft Corporation. SAP® R/3™ are a registered trademark of SAP-AG. ACL™ is a registered trademark of ACL-Service Ltd. All other firm- and product descriptions are belonging to the current owner. (Version 1.1)